

WINTER FAREWELL

Musical notation for the first system of 'WINTER FAREWELL'. It consists of two staves in treble clef with a key signature of one sharp (F#) and a 3/4 time signature. The melody is written in the upper staff, and the accompaniment is in the lower staff. Measures 1 through 6 are shown, with a 'V' (Vibrato) marking above the notes in measures 2, 4, and 6.

Musical notation for the second system of 'WINTER FAREWELL', measures 7 through 12. The notation continues from the previous system, with 'V' markings above the notes in measures 8, 10, and 12.

M'EN VAIS A PARIS

Musical notation for the first system of 'M'EN VAIS A PARIS'. It consists of two staves in treble clef with a key signature of one sharp (F#) and a 2/4 time signature. The melody is in the upper staff, and the accompaniment is in the lower staff. Measures 1 through 6 are shown, including a repeat sign in measure 4.

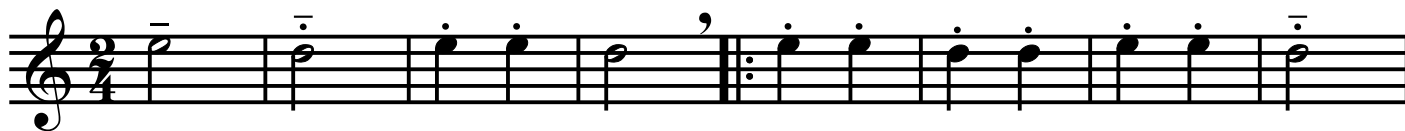
Musical notation for measure 39 of 'M'EN VAIS A PARIS'. The melody is written on a single staff in treble clef with a key signature of one sharp (F#). A 'V' marking is placed above the notes.

Musical notation for measure 40 of 'M'EN VAIS A PARIS'. The melody is written on a single staff in treble clef with a key signature of one sharp (F#). Two 'V' markings are placed above the notes.

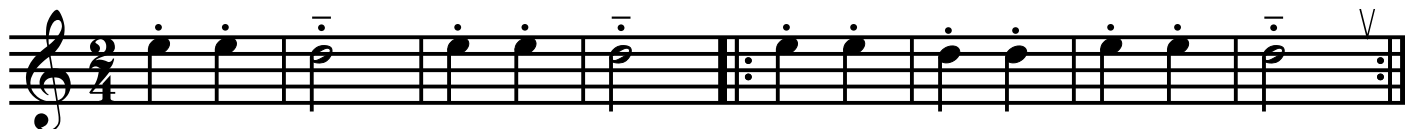
Musical notation for measure 41 of 'M'EN VAIS A PARIS'. The melody is written on a single staff in treble clef with a key signature of one sharp (F#). Three 'V' markings are placed above the notes.

Musical notation for measure 42 of 'M'EN VAIS A PARIS'. The melody is written on a single staff in treble clef with a key signature of one sharp (F#). Three 'V' markings are placed above the notes.

## RONDIN PICOTIN



## LES CLOCHES DE MONTAUBAN



## FAIS DODO



## LA PLUIE, LE VENT



## LE ROSSIGNOL



VALSE

Musical notation for the first system of the 'VALSE' exercise, measures 1-6. The piece is in 3/4 time. The treble clef staff contains a melody of eighth and quarter notes with accents. The bass clef staff contains a simple accompaniment of quarter notes.

Musical notation for the second system of the 'VALSE' exercise, measures 7-12. The treble clef staff features a melodic line with a slur over measures 10-11. The bass clef staff continues the accompaniment.

Musical notation for the third system of the 'VALSE' exercise, measures 13-18. This system includes first, second, and third endings for both staves. The first ending is marked with a 'V' symbol. The piece concludes with a double bar line.

PAVANE

Musical notation for the first system of the 'PAVANE' exercise, measures 1-6. The piece is in 4/4 time. The treble clef staff has a melody of quarter notes with accents and a 'V' symbol. The bass clef staff has a simple accompaniment of quarter notes.

Musical notation for the second system of the 'PAVANE' exercise, measures 7-12. The treble clef staff features a melodic line with a slur and a 'V' symbol. The bass clef staff continues the accompaniment. The piece concludes with a double bar line.